

*Intensive courses on the use of cardiac CT imaging in clinical practice by an internationally recognized team of experienced radiologists and cardologists, with mentored interpretation of cases on dedicated workstations*

### Introductory Course (2 days)

#### Learning objectives:

- Understanding and implementation of the relevant principles of cardiac CT imaging.
- Application of tips and tricks to optimize data acquisition and interpretation, including contrast administration protocols, dose saving and comprehensive post processing.
- Implementation of evidence-based cardiac CT applications in clinical practice. Interpretation of coronary artery disease, bypass grafts and stents on cardiac CT.

Mentored reading of 50+ CT cases with angiography/echo/MRI confirmation (towards ACC/AHA level 1 certification) on Siemens Syngo Via workstations (2 participants per WS), combined with practical, clinically oriented, interactive lectures on indications, data acquisition and image interpretation. The course language is English.

### Advanced Course (3 days)

#### Learning objectives:

- In-depth evaluation of coronary artery disease.
- Addition of advanced cardiac CT applications, including stress perfusion, FFR-CT, TAVI, infarct imaging CT, congenital and valvular heart disease.

Each mentored reading session is preceded by a short clinically oriented lecture on data acquisition, clinical use and image interpretation. In total 100+ CT cases will be interpreted with angiography/echo/MRI confirmation (towards ACC/AHA level 2 certification) on Siemens Syngo Via workstations (2 participants per WS). The course language is English.

### Course directors

**Ricardo Budde, Radiologist**  
**Alexander Hirsch, Cardiologist**

### Faculty

Mohamed Attrach  
Ronald Booij  
Adriaan Coenen  
Admir Dedic  
Marcel Dijkshoorn  
Joel de Groen  
Bob Meijboom  
Fay Nous  
Nils Planken  
Rodrigo Salgado  
Laurens Swart

### Venue

SkillsLab Erasmus MC, Rotterdam, the Netherlands

### Accreditation

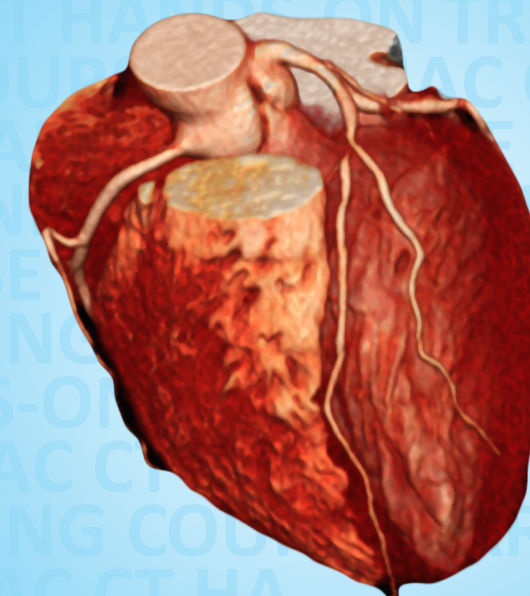
NVVC – Netherlands Society of Cardiology

NVVR – Netherlands Society of Radiology

### Registration

[www.cardiovascularimaging.nl](http://www.cardiovascularimaging.nl)

This course is endorsed by ESCR



### Address and information

**Erasmus MCSkillsLab**  
**& Simulation Center** Wytemaweg 80  
3015 CN Rotterdam  
The Netherlands

**Phone** +31 10 7038006

**E-mail** [skillslab@erasmusmc.nl](mailto:skillslab@erasmusmc.nl)

**Or** [r.budde@erasmusmc.nl](mailto:r.budde@erasmusmc.nl)

**Site** [www.cardiovascularimaging.nl](http://www.cardiovascularimaging.nl)

## Cardiac CT

Hands-on Training Courses

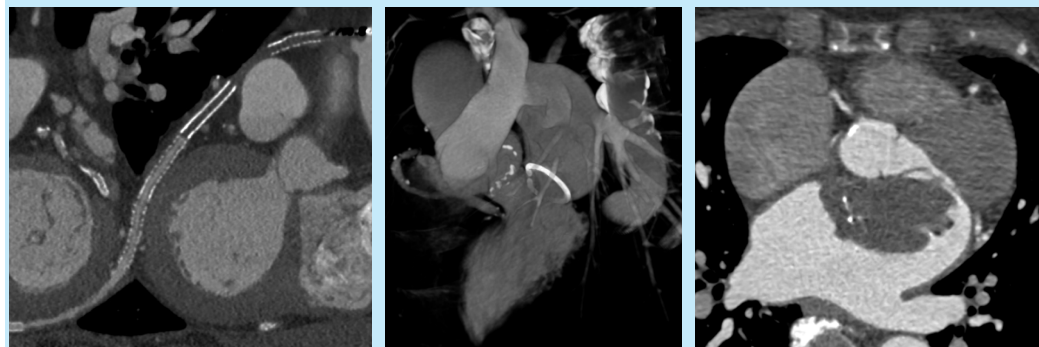
Introductory Course (2 days) & Advanced Course (3 days)

**30 September - 4 October 2019**

[www.cardiovascularimaging.nl](http://www.cardiovascularimaging.nl)

# Cardiac CT

## Hands-on Training Courses



## Introductory Course (2 days)

### Program Day 1

**8:30 - 17:00**

Two hour reading sessions with lunch and coffee breaks in between

- CT basics: principles and development, data acquisition and optimization
- Introduction to SyngoVia workstation: buttonology
- Cardiac and systematic coronary CT angiography reading: calcium score, coronary artery disease, abnormal anatomy, stenosis and occlusions.

**19:00-22:30**

Dinner with participants and faculty

### Program Day 2

**8:30 - 17:00**

Two-hour reading sessions with lunch and coffee breaks in between

- Coronary anomalies and variants
- CT in stable chest pain
- Great thoracic vessels: normal anatomy and pathology
- Structural heart disease

The maximum number of participants is 18

The course fee is € 925,- for medical specialists, € 725,- for residents, which includes lunch and other refreshments throughout the course, dinner on the first night, course syllabus with slides, relevant literature, guidelines.

Next courses: further dates will be announced on the website.

The course fee for both courses combined is € 1.995,- (€ 1.395,- for residents).

## Advanced Course (3 days)

### Program Day 1

**8:30 - 17:00**

Two-hour reading sessions with lunch and coffee breaks in between

- Stable chest pain / coronaries
- FFR CT
- Functional CT applications including perfusion
- Congenital heart disease in young and adult patients

### Program Day 2

**8:30 - 17:00**

Two-hour reading sessions with lunch and coffee breaks in between

- Valvular heart disease: native and prosthetic hearts valves
- Endocarditis
- TAVI and other CT guided interventions
- Patients with heart failure

### Program Day 3

**8:30 - 16:30**

Two-hour reading sessions with lunch and coffee breaks in between

- CT in the emergency room
- Stents and CABG
- CT acquisition
- What has not been covered / special requests
- Quiz and evaluation

The maximum number of participants is 18

The course fee is € 1.325,- for medical specialists, € 1025,- for residents. The course fee includes lunch and other refreshments throughout the course, course syllabus including slides, relevant literature, guidelines. Recommendations for accommodation available on request.

Next courses: further dates will be announced on the website

The course fee for both courses combined is € 1.995,- (€ 1.395,- for residents).